



**WOOD BUFFALO  
ENVIRONMENTAL ASSOCIATION**

## **ORGANIZATION PROFILE**



The WBEA operates in nistawâyâw, which is Cree for “where three rivers meet,” and what we now call Fort McMurray. We understand and respectfully acknowledge that the WBEA and our members operate on Treaty 8 territory and the ancestral and traditional territories of the Dene and Cree Peoples, and in the Métis Homeland. The WBEA recognizes that Indigenous peoples are the original stewards of this land and were and are integral to the development of the WBEA.



# OUR STORY

The WBEA monitors ambient air quality, deposition, and odour within the Regional Municipality of Wood Buffalo (RMWB) 24 hours/day, 365 days/year.

The WBEA was established more than 25 years ago to address air quality concerns in the region.

## We are:

- **Collaborative** - representing the needs of communities, environmental groups, Indigenous rightsholders, public stakeholders, government, and industry.
- **Fundamental** - Providing support for regulatory compliance for industry members to meet provincial requirements.
- **Integrated** - comprised of monitoring programs for ambient air, atmospheric deposition, forest health, and community monitoring.
- **Dynamic** - operating one of the most extensive air quality monitoring networks in North America.
- **Committed** - Ensuring regional stakeholders and rightsholders can make informed environmental decisions through timely and accurate reporting, and meaningful engagement.

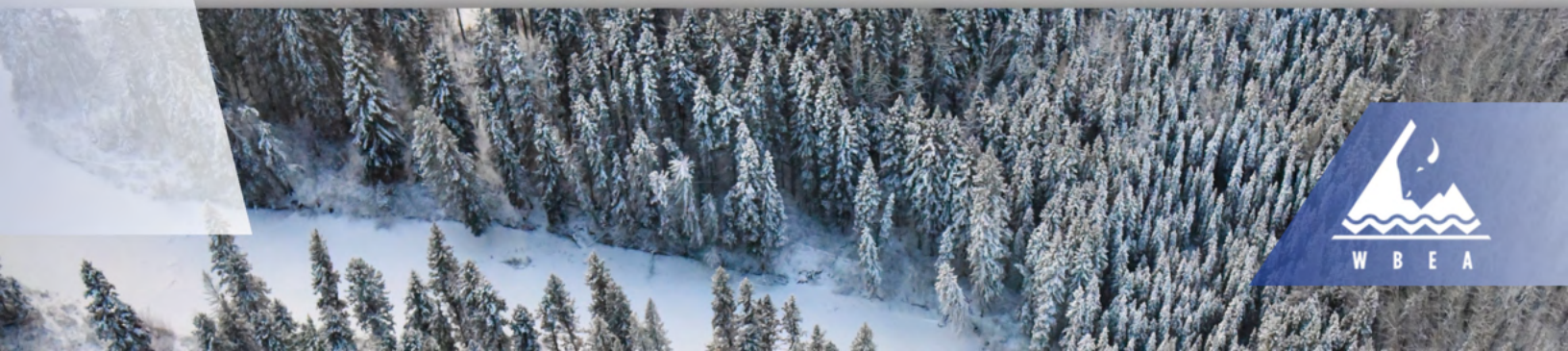
## Core WBEA Values

- Scientifically independent
- Recognize and respect Indigenous Knowledge
- Transparent and timely in communicating accurate and accessible data
- Dedicated to using best practices and technology
- Support diverse stakeholder and rightsholder participation and consensus-based decisions



### Cliff Dimm - Former WBEA President

During the 2016 wildfire, WBEA's personnel provided critical real-time information to the Regional Command Center. The value of WBEA and the work it does was showcased, and impacted decision-making. There was not only an increased awareness and visibility of the monitoring network, but the organization's contribution was also formally recognized by the province.





# OUR PARTNERS

The WBEA's General Members (GM) include 44 organizations representing Indigenous communities, government, non-government, and industry. The Governance Committee (GC), or Board of Directors is comprised of seven Directors including the President, Vice President, and Secretary/Treasurer. The GM and GC—with input from the WBEA's Technical Committees—provide the strategic direction and oversight for the organization.

The WBEA's staff of over 40 individuals ensure our environmental monitoring, reporting, and analysis programs meet the highest standards of compliance and quality.

The WBEA's Field, Data, and Laboratory Technicians, along with teams in Database Management & IT, Engagement & Communications, and Business Services, support our monitoring programs, with assistance from Subject Matter Experts.

## Indigenous Organization Members

- Athabasca Chipewyan First Nation
- Chard Métis Nation
- Chipewyan Prairie First Nation
- Christina River Dene Nation Council
- Conklin Resource Development Advisory Committee
- Fort McKay First Nation
- Fort McKay Métis Nation
- Fort McMurray 468 First Nation
- Lakeland Métis Nation
- McMurray Métis
- Mikisew Cree First Nation
- Smith's Landing First Nation

## Non-Government Organization Members

- Keyano College

## Government Members

- Alberta Energy Regulator
- Alberta Environment and Protected Areas
- Alberta Health
- Alberta Health Services
- Environment and Climate Change Canada
- Health Canada
- Parks Canada
- Regional Municipality of Wood Buffalo

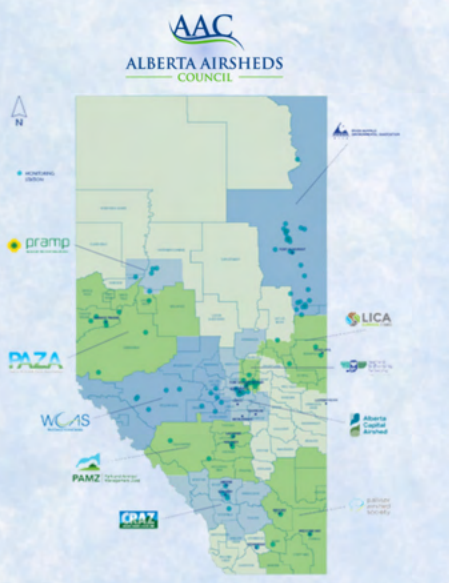
## Industry Members

- Athabasca Oil Corporation
- Canadian Natural
- Cenovus Energy Inc.
- Chemtrade Logistics
- CNOOC International
- Connacher Oil and Gas Ltd
- ConocoPhillips Company
- Greenfire Resources Ltd.
- H.J. Baker Sulphur Canada ULC
- Hammerstone Infrastructure Materials Ltd.
- Harvest Operations Corp.
- Imperial Oil Limited
- Inter Pipeline Limited
- IPC Canada Ltd.
- Keyera Energy Ltd.
- MEG Energy Corp.
- Parsons Creek Aggregates
- PetroChina Canada Ltd.
- Suncor Energy Inc.
- Sunshine Oilsands Ltd.
- Surmont Energy
- Syncrude Canada Ltd.
- Titan Tire Reclamation Corporation

## Alberta Airsheds Council (AAC)

The WBEA is a member of the Alberta Airsheds Council (AAC), which is a partnership of Alberta's ten Airsheds and provides leadership in support of healthy air quality for Albertans and the environment.

The AAC provides a forum for Airsheds to work and learn together, to continue to advance effective and efficient air monitoring, reporting and outreach.



## David Spink - Pravid Environmental Inc

As a Fort McKay First Nation representative over the last twenty years on several of WBEA's committees, I have been, and continue to be, very impressed with WBEA's commitment to quality environmental monitoring and reporting. However, what is most impressive to me, is WBEA's clear commitment to meeting Indigenous Communities' monitoring needs and expectations and its ongoing and active efforts to ensure that Indigenous Communities feel that they have, and play, a meaningful role in WBEA.





# OUR SUCCESS

## World-Class Environmental Monitoring & Reporting

Global recognition of WBEA environmental monitoring programs affords opportunities to share expertise broadly.

WBEA staff and research partners are sometimes selected to provide presentations, having most recently attended the Air & Waste Management Association's 117th Annual Conference & Exhibition. There, our team engaged on processes and findings from core air, deposition, and odour initiatives.

High quality environmental data is shared in near-real time on our website, [wbea.org](http://wbea.org), as well as information related to the Air Quality Health Index (AQHI). Monthly data reports are submitted to the provincial government, while annual community and data reports are made available to all stakeholders, rightsholders, and the public.

Additionally, "at-a-glance" air quality data is shared to the Annual Trends microsite, [annualtrends.wbea.org](http://annualtrends.wbea.org).

## Publications & Research

Data collected by the WBEA has been cited in numerous peer-reviewed publications, papers, and studies over the organization's history.

In 2019, the WBEA completed the analysis of historical data collected through the Atmospheric Deposition program, in combination with data collected by the Ambient Air Monitoring program, and published nine open access manuscripts in a Virtual Special Issue of the journal *Science of the Total Environment*.

A collection of publications dating to 2012 have been made available in the "Resources" section of [wbea.org](http://wbea.org).

## Outreach & Engagement

The WBEA produces specialized community factsheets directly comparing annual data from the WBEA's community air monitoring stations with Alberta Ambient Air Quality Objectives and Guidelines. All 2023 factsheets can be found under the "Resources" tab at [wbea.org](http://wbea.org).

In 2024, the WBEA received a gold Facilitation Impact Award from the International Association of Facilitators (IAF). This award recognized the highly participative, consensus-based approach adopted by the WBEA for its Network Assessment project. The nearly two-year project timeline ensured all participant perspectives were heard, engaged, and respected.

Also in 2024, WBEA external engagement initiatives included a series of community open house events. The WBEA opened six community monitoring sites to the public, answering questions and providing insight into regional air monitoring programs.

## Culture of Safety

An organizational commitment to safety is a cultural cornerstone at the WBEA. This can be seen in the maintenance of an Alberta Certificate of Recognition (COR) for health and safety management protocol which meets Alberta Safety standards.

All staff actively participate in the WBEA's safety program through monthly safety meetings and inspections, ongoing training, and the Joint Workplace Health and Safety Committee (JWHSC).

## Venita Heiland - Vision Creative

The WBEA represents a solid group of professionals with a diverse offering of skill and experience who collaborate with their partners to achieve the best result.

In Vision's close to ten year relationship with the WBEA, we've recognized their commitment to accuracy and timeliness in sharing important information and data.



Explore current job openings with the WBEA by visiting [wbea.org/careers](http://wbea.org/careers).

