



Wood Buffalo Environmental Association  
**Ambient Air Monitoring Station  
Site Documentation**

Waskōw ohci Pimâtisiwin

---

LAST UPDATED: MARCH 28, 2024



## Table of Contents

General Site Information .....	4
Station .....	4
Location.....	4
Owner/Operator/Approval Holder .....	4
Site Description .....	4
Site Influences .....	5
Localized Sources (within 20 metres of station).....	5
Roadway Influences .....	5
Major Point Sources.....	5
Station Equipment .....	6
Analytical Equipment .....	6
Meteorological Equipment .....	6
Support Equipment.....	6
Site photos .....	11
Station Photos.....	16

## Tables and Figures

Figure 1 – Area topographic map showing AMS 25.....	7
Figure 2 – Aerial image showing AMS 25.....	8
Figure 3 – Plan view image for AMS 25 site.....	9
Figure 4 – Elevation view image for AMS 25 site.....	10
Figure 5 – Environment looking North.....	11
Figure 6 – Environment looking East .....	12
Figure 7 – Environment looking South.....	13
Figure 8 – Environment looking West.....	14
Figure 9 – Meteorological Tower .....	15
Figure 10 – Photo showing the inlet and sample manifold .....	16
Figure 11 – Curb shot of the monitoring station .....	17
Figure 12 –Photo of the front of instrument rack .....	18
Figure 13 – Windrose (2019-2024) .....	19

## General Site Information

Revision Date: March 28, 2024

### Station

Station ID	AMS 25
Station name	Waskōw ohci Pimâtisiwin
Date station established	July 2017

### Location

Station street address	Environment and Climate Change Canada Oski Otin compound
Legal land description	5-25-94-11 W4
Airshed Zone	Wood Buffalo Environmental Association
Latitude	57°11'1.21" N
Longitude	111°38'21.94" W
UTM East	461350.886
UTM North	6337994.691
Nearest community	Fort Mackay
Community population	742
Census Year	2016

### Owner/Operator/Approval Holder

Operating Agency	Wood Buffalo Environmental Association
Address of Operating Agency	Unit 3-805 Memorial Drive, Fort McMurray, Alberta T9K 0K4
Name of Approval Holder	N/A
Approval number	N/A
Contact Name	Wood Buffalo Environmental Association
Address	Unit 3-805 Memorial Drive, Fort McMurray, Alberta T9K 0K4
Phone number	780-799-4420
Email address	info@wbea.org

### Site Description

Land use by sector	0 – 90 degrees	Wooded Area
	91 – 180 degrees	Wooded Area
	181 – 270 degrees	Oski-otin Compound
	271 – 360 degrees	Oski-otin Compound, gravel access road
Site elevation (m) (above sea level)	261.6 m	
Angle of elevation to nearby buildings	Greatest angle	N/A
	Building direction	N/A
Airflow restrictions	North	None

	East	None
	South	None
	West	House
Sample manifold	Type	All glass
	Inlet height above roof	1 metre
Meteorological Sensors	Type	Cup and vane
	Height above ground (m)	10 m
	Distance from station (m)	0 m

### Site Influences

#### Localized Sources (within 20 metres of station)

Type	Distance (m)	Description
None	n/a	n/a

#### Roadway Influences

Type	Traffic Volume	Distance (m)	Description
Main roadway	Low	30	Main roadway used by residential vehicles

#### Major Point Sources

Facility Name	Source Type	Distance from site (km)	Compass direction from site
CNRL Albian	Oil Sands Plant	10	Northeast
Syncrude	Oil Sands Plant	15	South
CNRL Horizon	Oil Sands Plant	20	Northwest

## Station Equipment

Equipment Owner: WBEA

### Analytical Equipment

Parameter	Make	Model	Serial Number	Date Instrument Installed	WBEA Data Start Date
SO <sub>2</sub>	Thermo Scientific	43i	1118148497	2017	August, 2017
TRS	Thermo Scientific	43iQ-LTE	1200025752	2020	October, 2020
TRS	CD-Nova	CDN-101	461	2020	October, 2020
H <sub>2</sub> S	Thermo Scientific	43i-LTE	1170050146	2019	August, 2017
H <sub>2</sub> S	Global Analyzer Systems	G150	2022-219	2023	August, 2017

### Meteorological Equipment

Parameter	Make	Model	Serial Number	WMO Site Class	Date Instrument Installed	WBEA Data Start Date
AT/RH	Vaisala	HMP155	P3640812	2	-	August, 2017
WS	Met One	010C-1	Y18364	3	-	August, 2017
WD	Met One	020C-1	U11345	3	-	August, 2017

### Support Equipment

Name	Description	Make	Model	Serial Number
Datalogger	Datalogger	Campbell Scientific	CR3000	2632
Datalogger	Datalogger	Campbell Scientific	CR1000	62004
Gas Dilution Calibrator	Dynamic dilution calibrator	Teledyne/API	T700	747
Zero air generator	Zero Air Generator	Teledyne/API	M701	4765
Shelter / Building	Air monitoring portable	ITB	8 x 16 trailer	ITB-15-16517
HVAC	Heating and air conditioning system. Wall mount unit	BARD	1 ton	-

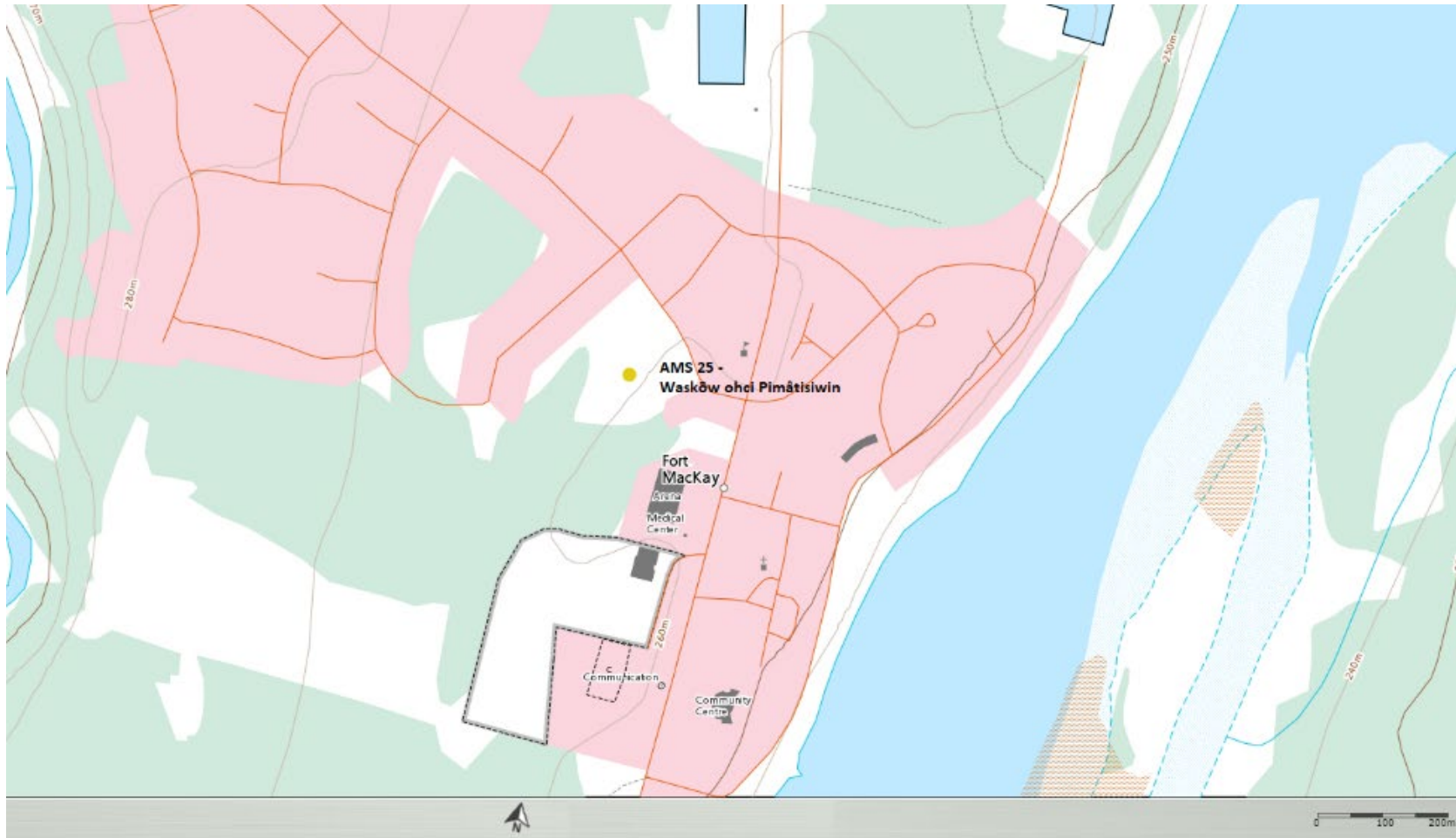


Figure 1 – Area topographic map showing AMS 25



Figure 2 – Aerial image showing AMS 25



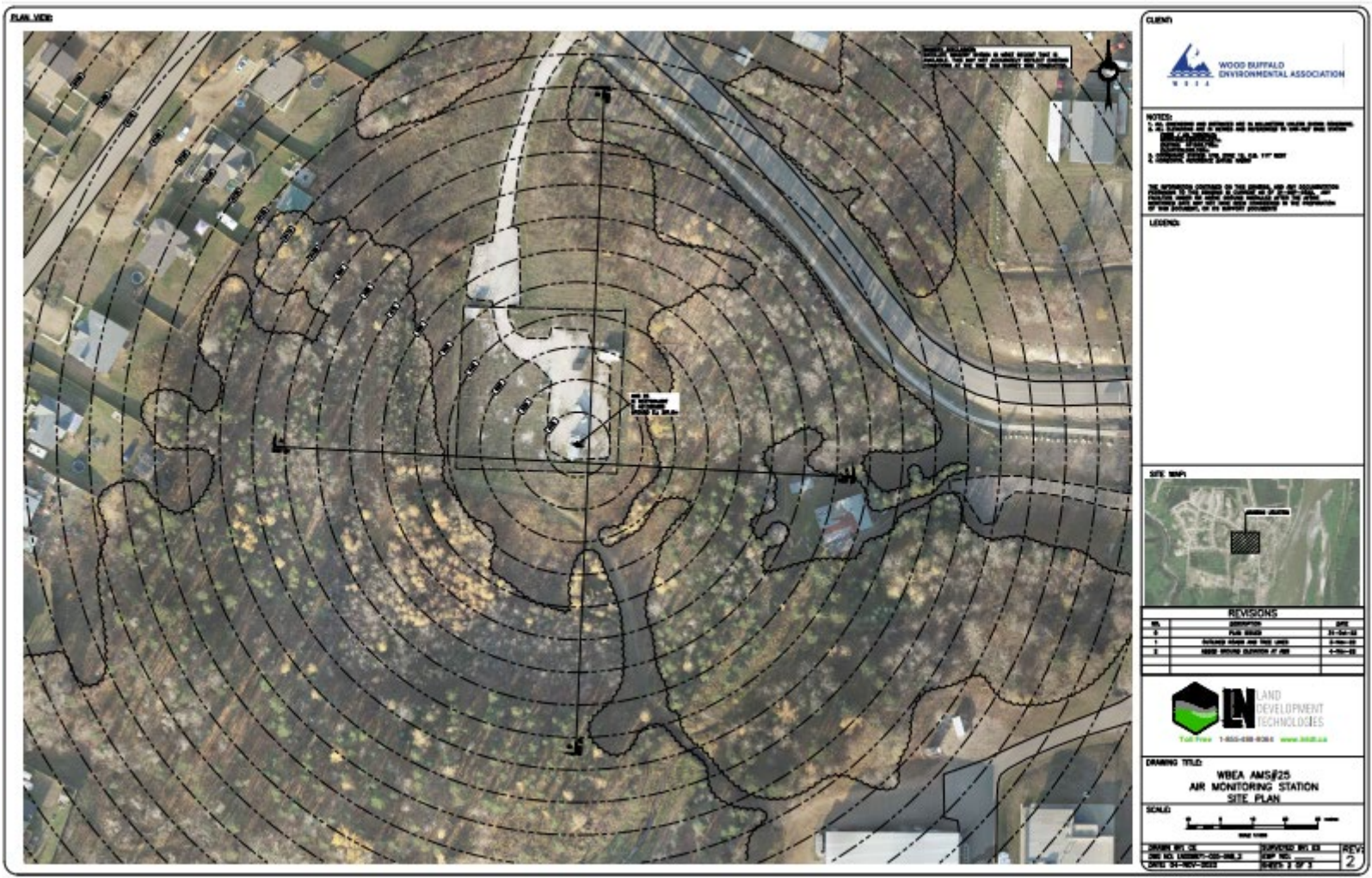


Figure 3 – Plan view image for AMS 25 site

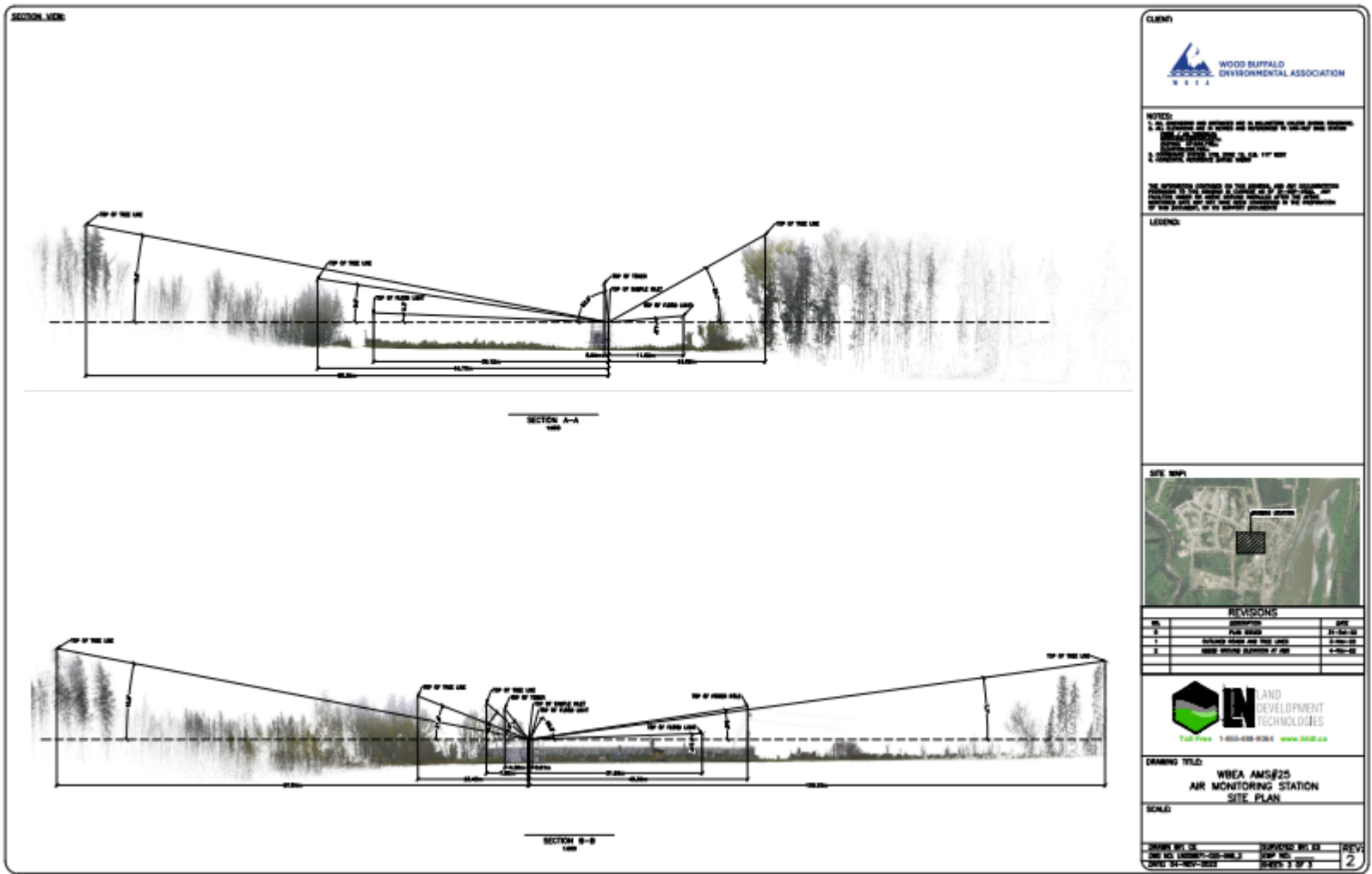


Figure 4 – Elevation view image for AMS 25 site



## Site photos

The following photos show the environment surrounding the monitoring station.



Figure 5 – Environment looking North



Figure 6 – Environment looking East



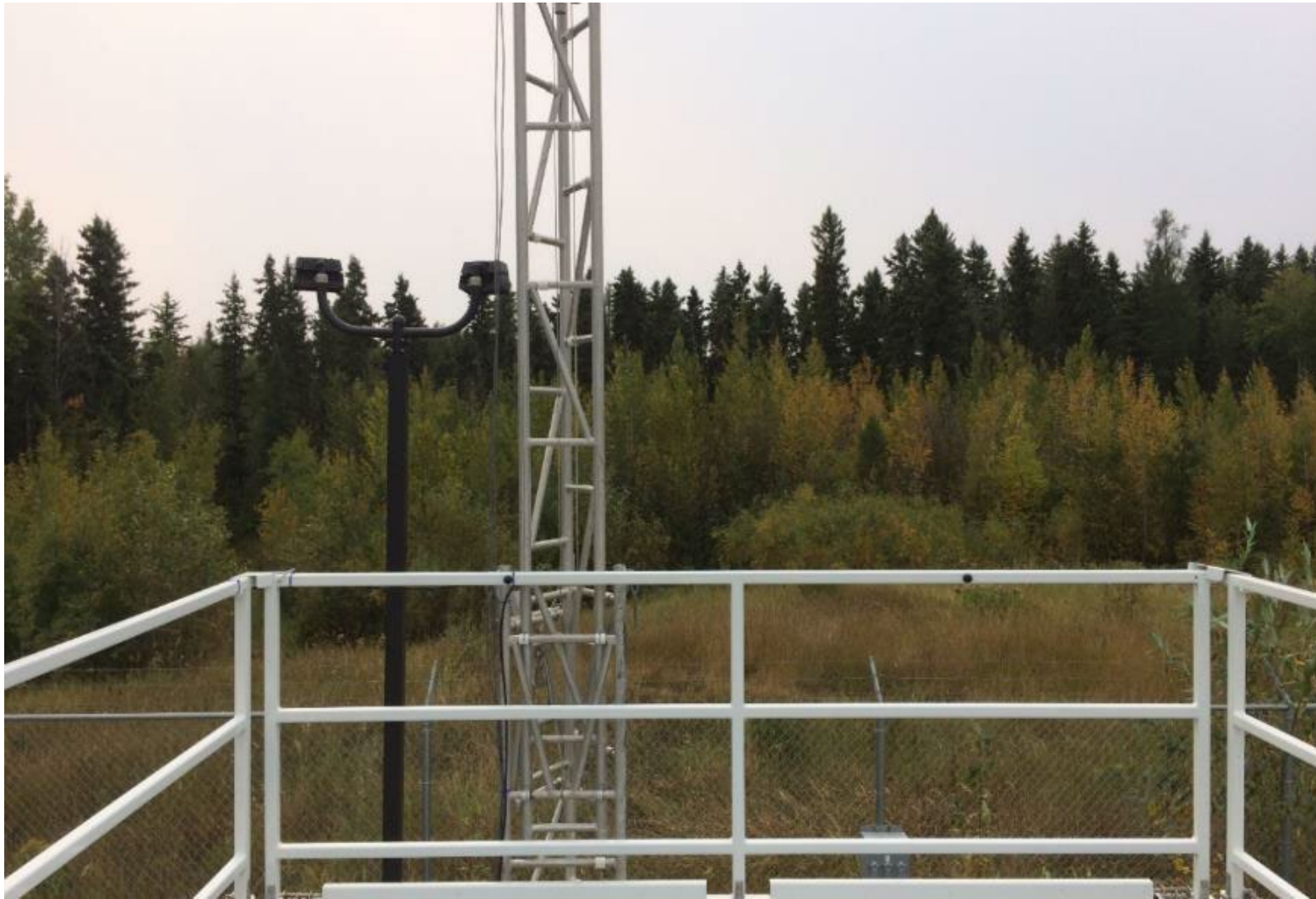


Figure 7 – Environment looking South



Figure 8 – Environment looking West



Figure 9 – Meteorological Tower



## Station Photos

The following photos show the monitoring station and instrumentation.



Figure 10 – Photo showing the inlet and sample manifold





Figure 11 – Curb shot of the monitoring station



Figure 12 –Photo of the front of instrument rack



Wood Buffalo Environmental Association  
Wind Rose 2019 - 2024

Wind Speed (WS) - km/h  
Waskow ohci Pimatisiwin

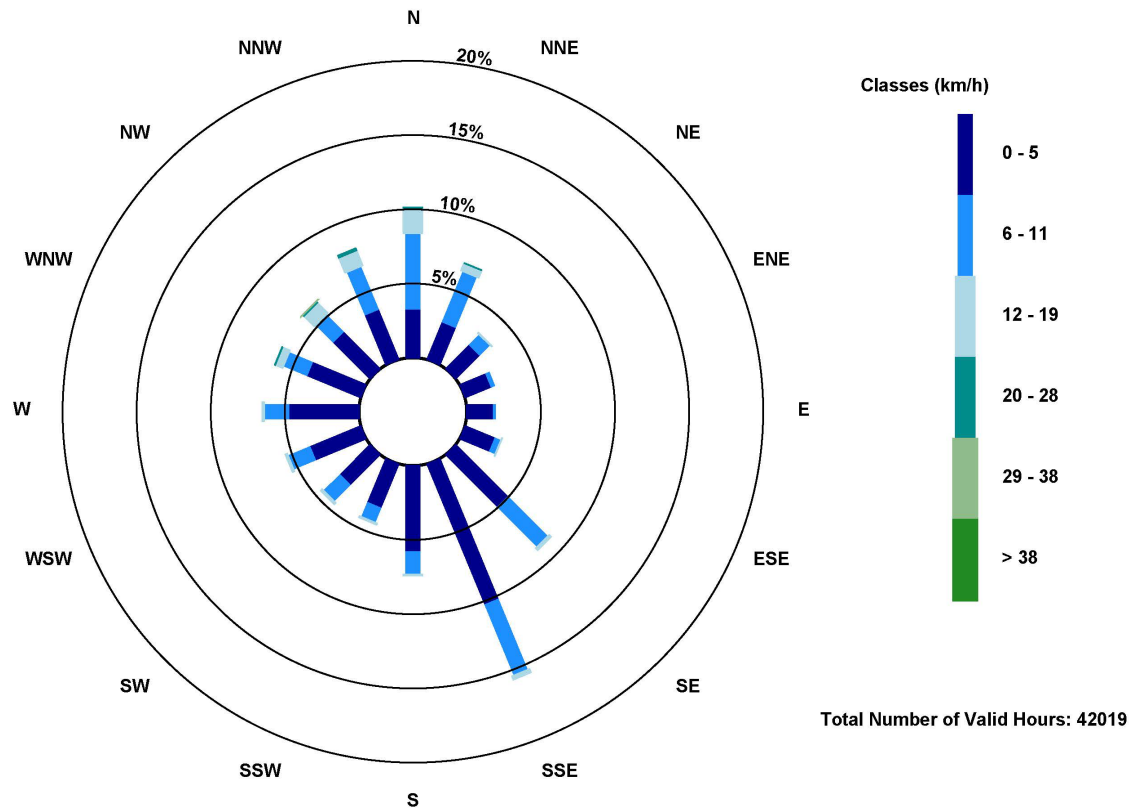


Figure 13 – Windrose (2019-2024)